

# Model 800 SERIES

ARTICULATING BOOM LIFTS



## Features

6 ft (1.83 m) Articulating Jib (800AJ only)  
Platform, Side Entry: 36 x 96 in. (0.91 x 2.44 m)  
Dual Rated Capacities (800A only)  
Oscillating Axle  
Inward Self-Closing Swinging Gate  
180 Degree Hydraulic Platform Rotator  
110V-AC Receptacle in the Platform  
5 Degree Tilt Alarm/Indicator Light  
Swing-Out Engine Tray  
12V-DC Auxiliary Power  
Hourmeter  
Control ADE® System  
Proportional Controls  
Gull-Wing Engine Hood  
Hydrostatic Drive  
Operator Tool Tray  
Platform Console Machine Status Light Panel\*  
Lifting/Tie Down Lugs  
Engine Distress Warning  
Rim Protector Lug Tread Tires  
Engine Distress Shutdown— Selectable via Analyzer  
All Motion Alarm  
SkyPower Package — 7500 Watt Generator,  
power cable to platform, 1/2 in. Air Line to Platform

\* Provides indicator lights at platform control console for system distress, 5 degree tilt light, and foot switch status.

## Accessories & Options

Platform: 36 x 72 in. (0.91 x 1.83 m)  
Fall Arrest Platform, Rear Entry:  
30 x 72 in. (0.76 x 1.83 m)  
Mesh to Top Rail— Bolt-on Aluminum 6 ft  
Mesh to Top Rail— Bolt-on Aluminum 8 ft  
Soft Touch System: 6 ft/8 ft  
Foam-Filled 18 x 19.5 Tires  
43.5 lb (19.7 kg) Propane Tank  
Cold Weather Start Kit (GM)<sup>2</sup>  
Cold Weather Start Kit (Deutz & CAT)<sup>2</sup>  
Hostile Environment Kit<sup>3</sup>  
Light Package<sup>4</sup>  
Platform Worklights  
Flashing Amber Beacon  
Arctic Package<sup>5</sup>  
Accessory Packages:  
SkyAir®  
SkyWelder®  
Pipe Rack®  
SkyGlazier®  
SkyCutter® and SkyAir® Package  
SkyWelder®/SkyCutter®, SkyAir® Combination

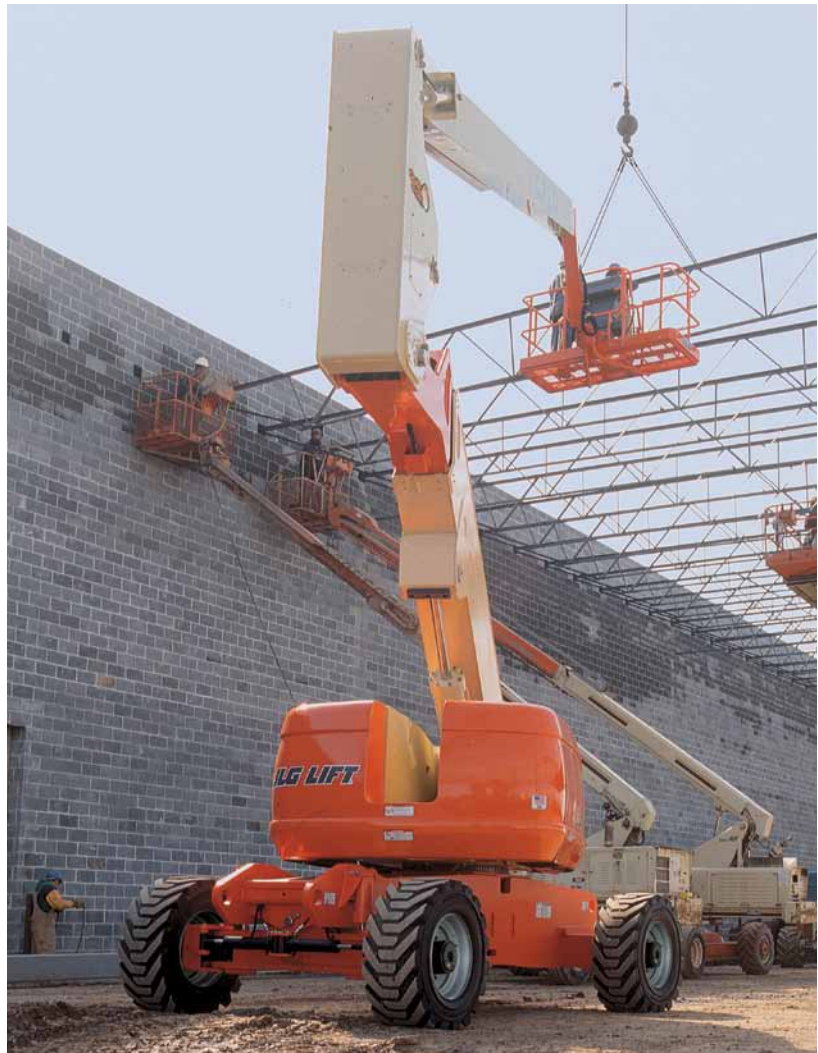
1. Foam-filled tires required.

2. Includes engine block heater (GM and CAT) or glow plugs (Deutz), battery heater, oil tank heater.

3. Includes console cover, boom wipers and cylinder bellows.

4. Includes head and tail lights, and platform worklights.

5. Includes arctic hydraulic hoses (drive and steer only) and main boom cable, arctic hydraulic oil, extreme cold engine oil, anti-freeze (CAT only), fuel conditioner, engine block heater, battery blanket, glow plugs, hydraulic tank heater, and oversized footswitch.



## Extra Reach and Versatility

- The industry's best reach envelope— 32 ft (9.75 m) up and over with 51 ft (15.54 m) of horizontal outreach
- Exclusive Workstation in the Sky® options and accessories

## Easier Maintenance, Reduced Costs

- Swing-out engine tray allows for faster and easier access for routine maintenance
- Exclusive Advanced Design Electronics (Control ADE®) System provides smoother machine functions, increased fuel efficiency and reduced emissions

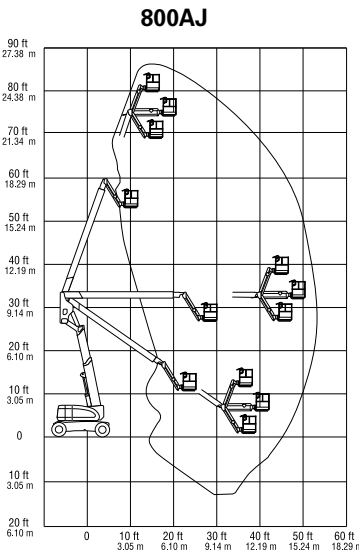
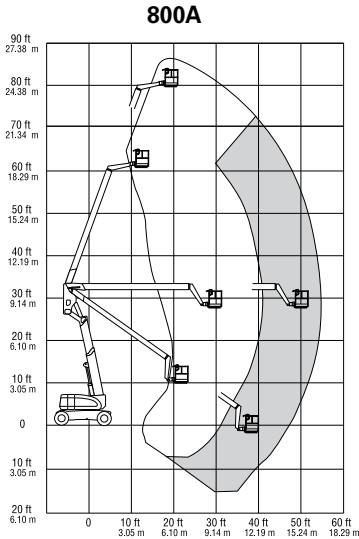
## Improved Performance and High Capacity

- Exclusive Quik Stik® boom can go from ground level to full elevation in less than 50 seconds
- Up to 1,000 lb (454 kg) platform capacity
- 45% gradeability and oscillating axle for improved traction

# Model 800 SERIES

## ARTICULATING BOOM LIFTS

### Specifications



#### Reach Specifications

|                                |                           |
|--------------------------------|---------------------------|
| Platform Height                | 80 ft (24.38 m)           |
| Horizontal Reach               |                           |
| 800A                           | 53 ft (16.15 m)           |
| 800AJ                          | 51 ft 10 in. (15.8 m)     |
| Up and Over Height             | 32 ft 1 in. (9.78 m)      |
| Swing                          | 360 Degrees Continuous    |
| Platform Capacity-Restricted   |                           |
| 800A                           | 500/1000 lb* (227/454 kg) |
| Platform Capacity-Unrestricted | 500 lb (227 kg)           |
| Platform Rotator               | 180 Degrees Hydraulic     |
| Jib Length                     |                           |
| 800AJ                          | 6 ft (1.83 m)             |
| Jib Range of Articulation      |                           |
| 800AJ                          | 130 Degrees (+70, -60)    |

#### Dimensional Data

|                              |                                  |
|------------------------------|----------------------------------|
| A. Platform Size             | 36 x 96 in. (0.91 x 2.44 m)      |
| B. Overall Width             | 8 ft (2.44 m)                    |
| C. Tailswing                 | 2 ft 6 in. (76 cm)               |
| D. Stowed Height             | 9 ft 10 in. (3.0 m)              |
| E. Stowed Length             |                                  |
| 800A                         | 36 ft 11 in. (11.25 m)           |
| 800AJ                        | 36 ft 6 in. (11.13 m)            |
| F. Wheel Base                | 10 ft (3.05 m)                   |
| G. Ground Clearance          | 12 in. (30 cm)                   |
| Weight**                     | 34,300 lb (15,559 kg)            |
| Max. Ground Bearing Pressure | 76 psi (5.3 kg/cm <sup>2</sup> ) |

#### Chassis

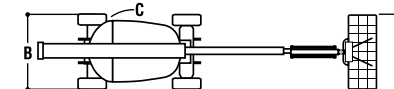
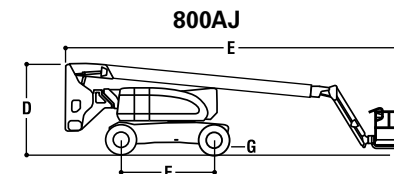
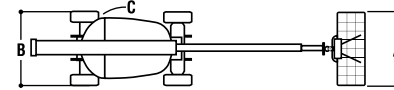
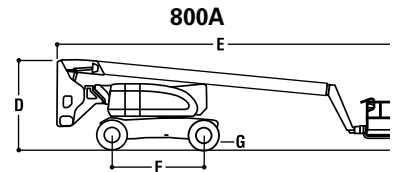
|                                  |                                   |
|----------------------------------|-----------------------------------|
| Drive Speed 2WD or 4WD           | 3.0 mph (4.8 kmph)                |
| Gradeability 2WD/4WD             | 30%/45%                           |
| Turning Radius, (Inside/Outside) |                                   |
| 2WS                              | 12 ft/22 ft 6 in. (3.66 m/6.86 m) |
| 4WS                              | 7 ft/14 ft 6 in. (2.13 m/4.42 m)  |
| Tires/Type                       | Pneumatic 445/55D x 19.5          |

#### Power Source

|                     |                   |
|---------------------|-------------------|
| Dual Fuel Engine,   |                   |
| GM Vortec 3000 MPFI | 82 hp (61 kW)     |
| Diesel Engine,      |                   |
| Deutz F4M2011       | 65 hp (48 kW)     |
| Caterpillar 3044C   | 63.3 hp (47.2 kW) |
| Fuel Tank Capacity  | 39 gal. (147.6 L) |
| Hydraulic Reservoir | 40 gal. (151.4 L) |
| Auxiliary Power     | 12V DC            |

\*Except CE rating.

\*\* Certain options or country standards will increase vehicle weight.



### The JLG "1 & 5" Warranty

JLG Industries, Inc. backs its products with its exclusive "1 & 5" Warranty. We provide coverage on all products for one (1) full year, and cover all specified major structural components for five (5) years. Due to continuous product improvements, we reserve the right to make specification and/or equipment changes without prior notification. This machine meets or exceeds applicable OSHA Regulations in 29 CFR 1910.67, 29 CFR 1926.453, ANSI A92.6-2006, and CSA Standard CAN3-B354.2-M82, as originally manufactured for intended applications.



#### JLG Industries, Inc.

1 JLG Drive  
McCconnellsburg, PA 17233-9533  
Telephone 717-485-5161  
Toll-free in US 877-JLG-LIFT  
Fax 717-485-6417

[www.jlg.com](http://www.jlg.com)

An Oshkosh Corporation Company

Form No.: SS-800A-605-10M  
Part No.: 3131108  
R011210  
Printed in USA