

Model G5-19A TELEHANDLER



Performance

Rated Capacity

At 24 in. (610 mm) load center,
5,000 lb (2,268 kg)

Capacity at Maximum Lift Height

4,850 lb (2,200 kg)

Capacity at Maximum Forward Reach

2,205 lb (1,000 kg)

Maximum Lift Height

19 ft (5.79 m)

Reach at Maximum Height

2 ft 7.5 in. (80 cm)

Maximum Forward Reach

10 ft 4 in. (3.15 m)

Break-out Force with Standard Bucket

7,823 lbf (34,800 N)

Towing Capacity

11,023 lb (5,000 kg)

Carriage Rotation

140 degrees

Travel Speed

First Gear: 4 mph (6.4 kmph)
Second Gear: 20 mph (32 kmph)

Gradeability

45%

Gross Vehicle Weight

13,889 lb (6,300 kg)

Standard Specifications

Engine

Make and Model	Deutz 2012
Fuel	Diesel
Fuel Tank	24 gal. (91 L)
Engine Oil	2.6 gal. (9.8 L)
Coolant	4 gal. (15 L)

Hydraulic System

Gear Pump	24.8 gal./min (94 L/min) @2200 RPM
Hydraulic Reservoir	17 gal. (64 L)

Transmission

Hydrostatic

Number of Gears

2/2

Axles

Full time planetary 4-wheel drive

Steering

Operator selectable 4-wheel circle,
4-wheel crab, 2-wheel front

Parking Brakes

Wet multi disc.

Tires

Standard: 405/70-20

Optional: 405/70-20

Cab

Certified FOPS/ROPS structure

Accessories & Options

Air Conditioning

Hydraulic Quick Switch

Special Paint

Light Group

Cab work lights—2 front, 2 rear
Work lights on boom
Rotating beacon

Road Light Package

Rotating Beacon

Fenders

Hitch

Simple, 2 bolt draw bar type

Attachments

Standard Carriage

48 in. (1.22 m)

Sideshift Carriage

Includes pallet forks

Pallet Forks

2 x 5 x 48 in.
(51 mm x 127 mm x 1.22 m)

2 x 4 x 48 in.

(51 mm x 102 mm x 1.22 m)

2 x 6 x 60 in.

(51 mm x 152 mm x 1.5 m)

Cubing Forks

2 x 2 x 48 in.

(51 mm x 51 mm x 1.22 m)

Bucket

1.3 cu yd (1.0 m³)

94 in. (2.39 m) wide

Light Material Bucket

2.6 cu yd (2.0 m³)

94 in. (2.39 m) wide

4-in-1 Bucket

1.3 cu yd (1.0 m³)

94 in. (2.39 m) wide

Manure Bucket

1.3 cu yd (1.0 m³)

94 in. (2.39 m) wide

Truss Boom

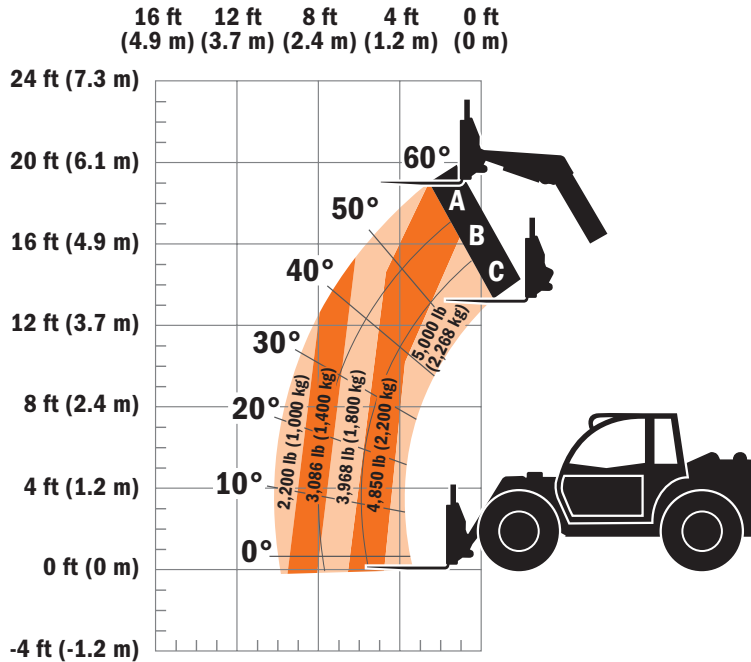
11.75 ft (3.58 m)

1,433 lb (650 kg) capacity

Fork Mounted Lift Hook



Model G5-19A TELEHANDLER



Dimensions	
Length (less forks)	150 in. (3.81 m)
Length at Fork Holder Plate	173 in. (4.39 m)
Width	80 in. (2.03 m)
Width of Cab	35 in. (89 cm)
Track Width	65 in. (1.65 m)
Height	86 in. (2.18 m)
Wheelbase	106 in. (2.69 m)
Ground Clearance	13 in. (33 cm)
Turning Radius Over Tires	12 ft 10.5 in. (3.92 m)
Turning Radius at Fork	16 ft 9 in. (5.11 m)

IMPORTANT

Rated lift capacities shown are with machine equipped with carriage and pallet forks. The machine must be level on a firm surface with undamaged, properly inflated tires. Machine specifications and stability are based on rated lift capacities at specific boom angles and boom lengths. (If specifications are critical, the proposed application should be discussed with your dealer.)

DO NOT exceed rated lift capacity loads, as unstable and dangerous machine conditions will result.

DO NOT tip the machine forward to determine the allowable load.

Use only JLG approved attachments with proper material handler model/attachment load capacity charts displayed in the operator's cab.



JLG Industries, Inc.
 1 JLG Drive
 McConnellsburg, PA 17233-9533
 Telephone 717-485-5161
 Toll-free in US 877-JLG-LIFT
 Fax 717-485-6417
www.jlg.com

Due to continuous product improvements, JLG Industries reserves the right to make specification and/or equipment changes without prior notification. This machine meets or exceeds EN 1459-1998 as originally manufactured for intended applications.

Form No.: SS-G5-19A-1205
 Part No.: 3132218
 Printed in USA